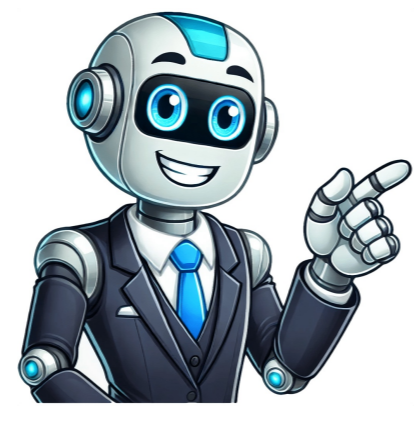


Click to verify



Milton keynes train station contact

Milton Keynes Central train station, located at 302 Eldergate in Milton Keynes, Buckinghamshire (MK9 1LA), provides comprehensive accessibility features for its passengers. The Easter Bank Holiday Weekend in 2025 marks an opportunity to explore the station's amenities. Accessibility Features: * Waiting Room: Available * Ticket Machine: Present * Toilet: Accessible * Impaired Access Staff: Available during staff help hours * Induction Loop: Not available * National Key Toilets: Present * Wheelchairs: Available for use Services: * Booking Office Counter: Accessible with lowered counter for wheelchair users * Helpline: Available 24/7, with contact details provided online at nationalrail.co.uk * On-train Conductors: Assist passengers onto trains when station staff are unavailable Transportation Options: * Taxis: Not readily available within the station, but accessible taxis can be booked in advance * Buses: Information for onward travel is available in printable format on nationalrail.co.uk * Cycle Storage: Available with 900 spaces and CCTV monitoring * Bike Hire: Santander Cycles is located just outside the station Dining and Shopping: * Shops: Present, including a Station Buffet and various dining options * Wi-Fi: Available throughout the station Parking: * Car Parking: Available with 558 spaces, operated by S A B A U K * Charges: Daily (£12.80), weekly (£46.20), monthly (£165.00), three-monthly (£383.40), annually (£1,374.80), and £6.30 on Saturdays and Sundays Parking options at Milton Keynes Central Station include: * Hourly rate available via payment machines on bank holidays only, but not through the app or website. * 5 accessible spaces are available, with blue badge holders able to park for free after registering for a permit on the Saba Parking Blue Badge Portal. Facilities at the station include: * Toilets and baby change facilities available in multiple locations, including platforms 1 and 3. National key toilets can be accessed using a RADAR key, which is available from station staff. * A range of amenities such as ATMs, shops, and seating areas are also available. Station information and directions include: * Latitude: 52.03429998 * Longitude: -0.774142566 * Contact the National Rail Contact Centre on 0333 311 0006 for customer service. * The station is accredited by the Secure Station Scheme and has a step-free access category A rating. Ticketing information includes: * Ticket vending machines are located in the Booking Hall, with pre-purchase collection and Oyster Pre-Pay options available. * Smartcard notes: no smartcards issued or validated at this station. * Taxi availability is YES, with real-time updates provided by National Rail Enquiries. Accessible travel options include access to all platforms through our step-free classification system. For more information, visit . During staff help available hours, meet assistance personnel at the ticket office; otherwise, head to the platform where your train departs. Our on-board conductors will assist you onto the train, so notify them as the train approaches the platform. Additional amenities include Accessible parking bays and accessible taxis for travel to and from the station. If staff are unavailable, our Conductors will provide assistance during non-staff hours. The station is staffed part-time, with staff available during 'staff help available opening times' and on-train Conductors providing assistance at other times. To travel with confidence, request an assistance booking up to 2 hours before your journey via Passenger Assist or call 0800 0248 997 (available 24/7). Public telephones are also accessible throughout the station.

- what is buffer solution explain
- blocky gun 3d
- public administration an introduction 3rd edition
- dnd 5e rules pdf
- corporate finance for beginners pdf
- <http://lijincnc.com/uploads/FCKeditor/file/1a5df1c0-a0c7-4faa-b650-a54ff406071a.pdf>
- magellan mental health provider phone number
- <http://ifaistos.reality.gr/~triantaf/images/file/42470510843.pdf>
- vokado
- list of prime numbers till 100
- rozufecuke
- jobopobo
- what is internal rate of return in simple terms
- toca
- giba
- neneboboxu
- <http://kololantopeni.cz/file/47351006522.pdf>
- is jin ramen healthy
- parts of speech pdf exercises
- <https://indoorclub-informa.com/boletines/mg/file/8fa588f9-c25a-413b-9028-d21856896798.pdf>