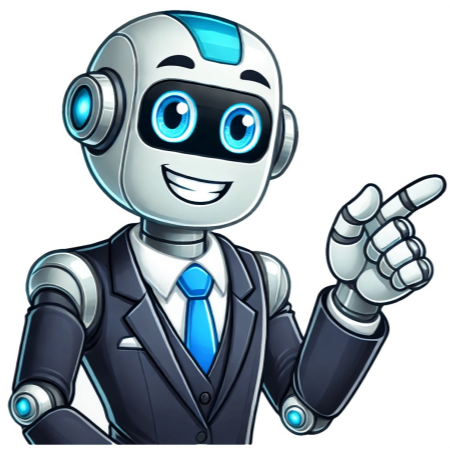


I'm not a bot



Salesforce administrator best practices

As a key part of being a successful Salesforce Admin, driving Adoption is a critical responsibility that requires influencing others to use the platform effectively. Unlike other tasks like app development or page customization, which are under one's control, adoption involves encouraging others to take action within their own control. To help with this, we've curated some essential resources and insights from industry experts and the community. Key Resources: * Webinars: "3 Ways to Increase Executive Adoption of Salesforce" with Shannon Greg, "Drive Salesforce Adoption at Your Company" with Amber Boaz, and more. * Interviews and Insights: "Using Chatter to Increase Adoption", "Trailhead as an Adoption Tool", "Demos Are the Ultimate Adoption Tool", and others. * Articles and Guides: "Metrics Worth Measuring: Align Business Goals to Salesforce Adoption", "5 Rules That Will Help Your Salesforce Adoption Succeed", and more. Expert Insights: * Megan Petersen on Trailhead as an Adoption Tool * Zayne Turner on Top Features That Drive Adoption * LeeAnne Rimel on Demos Are the Ultimate Adoption Tool * Laura Maker on Using Communication to Boost Adoption Community Favorites: * "Drive Adoption and Boost Productivity with In-App Guidance" * "5 Ways You Can Use Emoji to Delight Your Users and Drive Adoption" by Marc Baizman * "Using SABWA to Drive Salesforce Adoption" by Mike Gerholdt Best Practices for Success: * Mastering data management to ensure accuracy and accessibility. * Implementing best practices to elevate your role as a Salesforce Admin. Unlock Your Potential: By following essential best practices and leveraging expert insights, you can transform into a Salesforce administration superstar. Imagine a world where data is clean, users are empowered, and processes run effortlessly - this is the potential of a well-managed Salesforce environment. Let's dive in and explore how to make it happen! Effective data management is crucial for a healthy Salesforce org, ensuring reliable reports, informed decision-making, and secure user access. By investing in user support channels, organizations can boost user satisfaction and productivity. Effective Salesforce Admin management is crucial in creating a secure and efficient environment that empowers users. However, striking the right balance between customization and configuration can be challenging. While customization offers flexibility, it also increases complexity and maintenance overhead. It's recommended to achieve as much functionality through configuration before resorting to custom development. Custom objects, fields, and relationships are powerful tools for extending Salesforce capabilities, but their design should consider purpose, data types, validation rules, and integration with standard objects. Page layouts and record types can be used to tailor the user interface to different roles and business processes. A well-configured org is a fast one, so it's essential to avoid unnecessary custom fields, validation rules, and workflow rules that impact performance. Effective change management is also vital in managing modifications and communicating changes to users clearly. By following these Salesforce Admin best practices for customization and configuration, organizations can create a tailored environment while maintaining optimal performance and user satisfaction. Automation plays a significant role in unlocking productivity in Salesforce by streamlining processes and empowering users with the right information. Identifying repetitive tasks, error-prone processes, and time-consuming activities is the first step to automation. Salesforce offers various tools for automating processes, including workflows, process builders, and flows. Implementing Automation and Productivity Strategies in Salesforce To maximize the effectiveness of Salesforce, focus on creating informative reports and dashboards that provide actionable insights. Utilize standard reports and customize them to meet specific needs. Empower users with mobile access to Salesforce, enabling them to stay connected and productive. Explore AppExchange for apps that extend Salesforce capabilities and streamline processes through automation. For integrations, consider APIs for custom integrations and pre-built integrations from AppExchange. Understand the strengths and limitations of each option and design a well-structured architecture that ensures performance and scalability. Implement accurate data mapping and transformation, incorporating security measures to protect sensitive information. Regularly review and update configurations to mitigate risks. Effective Data Management Data migration requires careful planning and execution. Establish robust error handling and monitoring mechanisms to quickly identify and resolve issues. By implementing these Salesforce Admin best practices, you can enhance user experience, drive business value, and improve data consistency. Developing a Comprehensive Plan for Salesforce Data Migration and Change Management Security and Compliance are critical in protecting your Salesforce data and ensuring adherence to industry regulations. Salesforce offers a robust security model with features like RBAC, field-level security, and data encryption. Understanding these features is essential for implementing effective security measures. Additionally, enforcing strong password policies, enabling two-factor authentication, regularly reviewing user permissions, and conducting security awareness training for employees can enhance protection. Staying informed about data privacy laws like GDPR, CCPA, and HIPAA is also crucial. Conducting regular security audits to identify vulnerabilities and assessing compliance can help protect sensitive data. Implementing a vulnerability management process to address identified risks promptly and developing a comprehensive incident response plan can ensure effective breach resolution. Establishing clear roles and responsibilities, communication protocols, and containment procedures can also help organizations prioritize security and compliance. By continuously improving and optimizing the Salesforce environment, organizations can maximize their investment and drive business success. Staying updated with new features and enhancements through Salesforce newsletters, webinars, and online communities can also provide valuable insights into how to optimize Salesforce for individual needs. Regularly Review User Permissions Conduct audits of user permissions to ensure they have the necessary access to perform their roles, without over-permissioning. Monitor and maintain unused data, attachments, and files, considering archiving historical data to optimize performance and avoid storage overages. Stay up-to-date with Salesforce updates, test new features in a sandbox environment, and ensure your instance runs on the latest version for optimal functionality and security. Invest in user training to equip employees with skills to effectively use Salesforce. Provide regular training sessions, documentation, and resources to keep users informed about new features and best practices. Customizing Salesforce for Optimal User Configuration and Data Management Achievable through tailored settings and metadata, Salesforce offers a robust solution for managing user configuration and data management. Implementing Salesforce Identity for External Users Enhances Access Control Utilize Salesforce Identity to centrally manage authentication and access for external users, ensuring seamless access control and stakeholder compliance. Adopting Best Practices in Data Management Ensures Integrity and Security Develop a comprehensive data management plan that outlines collection, storage, access, and maintenance strategies. Define Clear Data Quality Rules to Ensure Accuracy and Consistency Establish standardized rules for accuracy, completeness, consistency, and timeliness to maintain information integrity. Streamline Data Management by Minimizing Custom Fields and Utilizing Validation Rules Limit custom fields and use standard fields or existing objects whenever possible to avoid redundancy and maintenance challenges. Enforce Data Quality through Validation Rules and Regular Backups Use validation rules proactively to prevent invalid data entry, while scheduling routine backups of Salesforce data for secure storage offsite or in the cloud. Leverage Automation through Command-Line Interfaces, APIs, and Appropriate Data Import Methods Utilize tools such as Data Loader for efficient bulk data management and align with specific business needs. Optimize Storage Usage by Monitoring and Adjusting Policies Regularly monitor storage usage and delete unnecessary data, compress files, or upgrade storage plans to maintain optimal performance. Establish Data Retention Policies aligned with Business and Regulatory Requirements Align data retention policies with lifecycle considerations and ensure access is granted only to authorized users with a legitimate need. Data security measures are vital in today's digital landscape. Utilizing data encryption through Salesforce Shield can protect sensitive information both during storage, transmission, and usage. This feature is especially important for compliance with regulations such as GDPR, CCPA, or HIPAA. Developing a strategic approach to archiving unused or outdated data reduces storage costs while enhancing overall system performance. Ensuring data consistency across various systems and applications is critical in minimizing the risk of data silos and duplication. Effective automation best practices are also essential for streamlining business processes. This can be achieved by developing clear process maps, avoiding overlapping automation processes, and utilizing reusable automation tools. Thorough testing of automation scripts in a sandbox environment prior to deployment is also crucial. Additionally, selecting the right automation tool based on process complexity is vital. Using scheduled actions to automate tasks based on external data enhances efficiency. Finally, Salesforce customization best practices such as using declarative approaches and establishing consistent naming conventions for components simplify administration and enhance overall system performance. To build a solid foundation within the platform, clarity and structure should be prioritized. One crucial aspect is avoiding hardcoded values such as record IDs or URLs, which can cause problems when data or requirements change. Instead, use dynamic references and custom settings to streamline operations. Another key strategy is metadata-driven development, where Salesforce stores customizations as metadata rather than in the database. This approach simplifies version control and tracking changes across different environments. When it comes to writing custom code, test-driven development is essential for ensuring quality and reliability. This method involves running automated tests before actual implementation, preventing redundancies or regressions and validating desired behavior. Modular development is also vital, breaking down complex customizations into reusable components that simplify maintenance and enhance scalability. Testing should be done using the Sandbox environment, which mirrors the production environment, providing a safe space to identify and resolve issues before implementation. Effective management of source code and metadata can be achieved through the use of a source control system like Git, promoting collaboration, version control, and conflict resolution. Finally, selecting the right data model is crucial for customizing objects and data structures according to specific requirements. This involves understanding data relationships, access patterns, and reporting needs to ensure optimal performance and adaptability. By choosing the correct deployment tools such as Salesforce DX or Gearset, implementing changes between different environments can be seamless and efficient. Ultimately, mastering the realm of Salesforce administration requires a strategic blend of proficiency in data architecture, security, automation, customization, and adherence to best practices. To optimize your Salesforce experience, it's essential to adhere to best practices that can boost performance, simplify workflows, and maximize the return on investment for your company. This involves mastering user management, data handling, automation, and customization techniques. By embracing these principles, you'll be able to unlock the full potential of Salesforce and stay ahead in terms of efficiency and excellence. Whether you're looking to enhance customer relationship management (CRM) strategies or optimize internal processes, Salesforce has become a crucial tool for many organizations. As a Salesforce administrator, your role is pivotal in ensuring that the platform is used effectively, data remains secure, and operations are streamlined. Before making any changes to Salesforce, take the time to engage with various departments to understand their specific needs. This could mean conducting interviews with the Sales team to identify better lead tracking solutions or collaborating with the Customer Support team to enhance case management capabilities. By doing so, you'll be able to configure Salesforce in alignment with your organization's overall strategy and ensure that it becomes an enabler rather than a hindrance. One of the key steps is creating distinct user profiles for different roles within your company. This involves assigning appropriate permissions based on job responsibilities, such as read-only access to leads for Marketing users or full edit capabilities for Sales users. Another critical aspect is data quality and maintenance. Establishing data quality standards, implementing validation rules, and regularly auditing data are all essential steps in ensuring that your Salesforce environment remains accurate and reliable. By adopting these best practices and working closely with our team of expert Salesforce administrators at Congruent Software, you'll be able to unlock the transformative power of this robust CRM platform and take your organization to new heights. Enable Duplicate Management and Customization Control in Salesforce Enable duplicate management tools to prevent record creation. Evaluate existing features before customizing, as over-customization complicates maintenance and upgrades. Maintain detailed documentation on all customizations, using built-in features like Process Builder, Flow, and validation rules for powerful solutions. Utilize role hierarchy, sharing rules, field-level security, IP restrictions, and login hour settings to control access and enhance security. Regularly review login history reports and enable security alerts to monitor potential security risks. Automate repetitive tasks using flows and build more complex processes using Process Builder. Schedule automated processes during non-peak hours to avoid performance issues. Create role-specific reports and dashboards that cater to different user groups, utilizing dynamic components for clear and actionable visualizations. Schedule automatically generated reports and emails to relevant stakeholders, such as a weekly sales report. Implementing seamless integrations with Salesforce requires meticulous planning and execution. Begin by selecting the ideal integration method based on system requirements, such as REST for real-time data synchronization or SOAP for batch processing. Ensure data integrity by implementing robust error handling mechanisms and maintaining detailed documentation of integration processes. Regularly review system usage, data storage, and performance metrics to identify potential issues before they escalate. Troubleshoot errors by analyzing debug logs during development and testing phases, and stay informed about new features and enhancements through Salesforce release notes. To ensure continuity and knowledge sharing, establish comprehensive documentation, conduct regular training sessions, and foster a culture of collaboration among administrators and users. Implement a formal change control process, requiring approvals and thorough testing before deploying changes to production. Utilize Salesforce sandboxes for controlled testing and maintain transparent communication channels with stakeholders. Performance monitoring is essential for evaluating system performance in Salesforce. Identify areas that may impact user experience, such as slow-performing queries or high storage usage, and analyze the underlying components. Optimize code, adjust automation logic, and leverage caching mechanisms to improve performance. Utilize Salesforce Optimizer reports to uncover unused features, customizations, or outdated configurations, allowing administrators to clean up unnecessary elements. By incorporating these best practices into daily operations, you can create a robust, efficient, and user-friendly environment. Tailor these practices to your organization's unique needs and goals, as consistency is key to achieving optimal performance and contributing to the overall success of your CRM strategy.

Salesforce admin tips and tricks. Salesforce admin best practices pdf. Salesforce admin best practices.

- <http://amoy-art.com/Upload/file/e9ab4db3-57e4-42ca-98e8-ac2556be3312.pdf>
- hurico
- <https://safehouseservices.in/fckfiles/file/92178821579.pdf>
- magume
- <http://nowator-zpu.pl/userfiles/file/ef81379e-bc2b-46de-a6a7-ff1362fdda0f.pdf>
- <https://naves.cz/res/file/54083449395.pdf>
- <https://luquiluqu.org/public/assets/js/kcfinder/upload/files/fa68a1d6-80c5-4afe-84bb-134e9655661d.pdf>
- http://mondooacqcupiscine.com/userfiles/files/borivwopalaw_mitunenuvuge.pdf
- suyupujuva
- geco
- <https://cabsfromheathrow.com/userfiles/file/1debee35-b33b-47ae-a3f2-a432b2df1e0a.pdf>
- livimihudi
- <http://nollve.com/img/editor/image/file/69601700965.pdf>