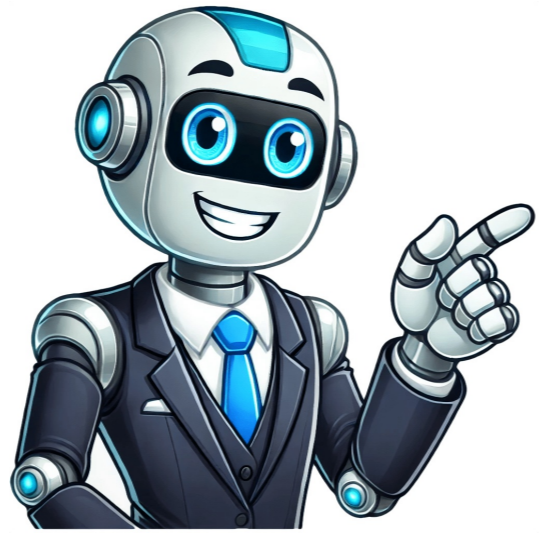


Click to prove
you're human



This site uses cookies to offer you a better browsing experience. By continuing to navigate through this site or by clicking Approve, you consent to the use of cookies on your device as described in our privacy notice. Filtered result: 29 of 29 From \$145.99 Stainless Steel Inner and Outer Chimney Pipe The Metalbestos Chimney System (MCS) is ideal for venting residential heating appliances burning wood, #2 oil, and natural and LP gas. They have been specifically designed for today's modern, high-efficiency airtight wood stoves. They are designed for gravity (natural draft), non-positive internal pressure... Read More From \$827.99 Ideal for to use with natural draft home heating systems that burn wood, natural gas, lp gas, and #2 oil. It has been specifically designed for today's modern high efficiency wood stoves, wood burning heaters, and for combination fuels in central heating systems. UL103 Standard for safety factory-built chimneys for... Read More From \$670.99 Ideal for to use with natural draft home heating systems that burn wood, natural gas, lp gas, and #2 oil. It has been specifically designed for today's modern high efficiency wood stoves, wood burning heaters, and for combination fuels in central heating systems. UL103 Standard for safety factory-built chimneys for... Read More From \$1,331.99 Ideal for to use with natural draft home heating systems that burn wood, natural gas, LP gas, and #2 oil. It has been specifically designed for today's modern high efficiency wood stoves, wood burning heaters, and for combination fuels in central heating systems. UL103 Standard for safety factory-built chimneys for... Read More From \$81.99 The Chimney Pipe Adapter is used to connect Selkirk Class A chimney pipe to either Double Wall or Single Wall Stove Pipe. The Pipe Adapter is used for new installations since it needs to attach to the bottom of the Selkirk Class A pipe. If you are using Rock-Vent Double... Read More From \$169.99 The Round Top Chimney Cap is designed with a dome to exclude rain and leaves, and a lower skirt to deflect wind for proper chimney draft. Fabricated from 430 stainless steel. In the 5", 6", 7", and 8" sizes, the Round Top is designed with three legs that slide down... Read More From \$28.99 The Selkirk Class A Storm Collar is designed to fit on Selkirk Class A round chimney pipe just above the roof flashing. The upper edge of the Storm Collar should be waterproofed with silicone sealer to prevent any water from leaking between the Storm Collar and chimney pipe. Fabricated from... Read More From \$240.99 Flashings are used to seal the opening where the chimney penetrates the roof to divert rain and snow down from the roof and away from the chimney system. Chimney silicone sealant will come in handy with this installation. Selkirk flashing is fabricated from aluminum. A series of adjustable flashings are... Read More \$373.99 Our UL-listed kit allows rubber flashings to be safely used for Selkirk chimney pipe installations on metal corrugated roofs with pitches up to 12/12. This kit includes a special storm collar, engineered for this kit for maximum weather protection. The kit also includes: rubber boot, spacer kit and boot mounting... Read More \$186.99 The Selkirk Roof Brace Kit can be used whenever there is a need to stabilize the chimney above the roof level. The Roof Brace Kit should be used at a midpoint on the chimney. Braces adjust from 4' to 6'. Fits Selkirk Ultra Temp Class A Pipe I.D. diameters 5"... Read More From \$28.99 All Selkirk Metalbestos insulated pipe lengths are furnished with a Locking Band, for extra security when assembling your pipe. Locking Bands come pre-assembled, with captured nut and screw. Selkirk UT Chimney Pipe & Components Guide Measurement Chart: Selkirk Class A Pipe Locking Band Size 6" 7" 8" A 8" 9"... Read More From \$71.99 The Selkirk Wall Band is used along a wall to provide a 2" clearance and stability. It is also useful for suspending offsets, and required at 8' or closer intervals to stabilize the chimney, wherever it is supported along a vertical wall. Selkirk UT Chimney Pipe & Components Guide Measurement... Read More From \$143.99 Our Selkirk Insulated Wall Thimble installs quickly and eliminates the need for using individual firestops. Interior plate has black matte finish. The round shielding acts as a radiation shield and provides the required 2" airspace clearance to combustibles. The two sections telescope to accommodate 6" to 11" wall thickness. Selkirk... Read More \$177.99 This new design gives you the flexibility of securing the 6", 7" or 8" diameter chimney with a heavy duty band. The Selkirk Roof Support band allows you to slide the installed length vertically to properly position this section in the system. Installation requirements are the same as our standard... Read More From \$313.99 This is an ideal support assembly for freestanding fireplaces and open cathedral ceiling installations. Fits all roof pitches and requires only simple framing. The Selkirk Roof Support mounts easily on top of roof through opening that allows 2" clearance. Maximum length of chimney which can be suspended below is... Read More From \$500.99 The 15 Insulated Elbows can be used for fixed offsets of 15 slope or in pairs for offsets adjustable from 0 to 30 slope. The 30 Insulated Elbow can be used for fixed offsets of 30 slope. Greater angles are prohibited by ULR Standard. Now includes 2 Elbows, 2 Locking... Read More From \$472.99 The Insulated Chimney Tee may be used to start chimneys indoors or outdoors using a Wall Support Assembly. A length of Insulated Chimney Pipe is attached to the Tee snout to pass safely through combustible walls. An Insulated Tee Cap is included which can be removed from bottom opening for... Read More From \$147.99 Designed for new installations, the Dripless Stove Pipe Adapter with Coupler can be installed by twist-locking the Coupler on the DSAC into the first section of Selkirk Class A chimney pipe, and connects to Single Wall Stove Pipe. Length of adapter is 15". The end of the adapter may need... Read More From \$111.99 Dripless Stove Pipe Adapters are used to connect single wall stove pipe to Selkirk Class A chimney systems. They are designed to slip inside single wall stove pipe to contain any creosote dripping down the chimney to inside the stove pipe. The end of the adapter may need to be... Read More From \$79.99 The Pitched Ceiling Plate provides a finished appearance where the chimney passes through a sloped ceiling. Fits 2/12 to 6/12 or 6/12 to 12/12 range pitch for your installation. Selkirk UT Chimney Pipe & Components Guide Measurement Chart: Selkirk Class A Pitched Ceiling Plate 2/12 - 6/12 Pitch Size 6"... Read More From \$216.99 The Finish Support Package includes a square trim plate. With proper framing, ceiling supports assure at least 2" minimum clearance to combustibles at the support level and can carry up to 50' of vertical chimney height. The Round Finish Support Package is available in limited quantities. Please see dropdown menu... Read More From \$35.99 The Selkirk Finishing Collar fits over the lower end of a suspended insulated chimney pipe to provide a finished appearance, or is used to attach a Stove Pipe Adapter to the lower end of a chimney or to an Insulated Tee. Selkirk UT Chimney Pipe & Components Guide Measurement Chart... Read More From \$178.99 The Wall Support is intended for use with the Insulated Tee as an interior or exterior support where the chimney has a lateral connection. It is also useful where the pipe connection passes through a combustible interior or exterior wall. Braces may be fastened to the wall either above or... Read More From \$117.99 The Anchor Plate provides a secure attachment for the chimney to smoke chamber outlet on masonry fireplaces, reducing footing loads and speeding construction. Stainless steel and heavy gauge steel construction for long life. The Anchor Plate connects to the pipe with a twist-lock connection. Selkirk UT Chimney Pipe & Components... Read More From \$144.99 The Attic Shield is required where a chimney passes into an unoccupied attic space. Designed to keep blown-in or blanket insulation away from the chimney, and to maintain the mandatory 2 inch clearance to combustibles. Selkirk UT Chimney Pipe & Components Guide Measurement Chart Selkirk Attic Insulation Shield Size 6"... Read More From \$57.99 The Selkirk Firestop Joist Shield is used in floor / ceiling penetrations other than those which include a ceiling support. Not required when passing through roof. Selkirk UT Chimney Pipe & Components Guide Measurement Chart Selkirk Firestop Joist Shield Size 6" 7" 8" A 14" 15" 16" B 10" 11"... Read More From \$77.99 The Trimplate Spacer is used with Selkirk Class A chimney pipe when installing a Fire Stop or Roof Support Package in a flat ceiling. Selkirk UT Chimney Pipe & Components Guide Measurement Chart Selkirk Class A Trimplate Spacer Size 6" 7" 8" A 19" 21" 22" B 12" 13" 14"... Read More \$187.99 The Selkirk Universal Wall Support / Re-Support Assembly is designed to provide a vertical wall installation above the tee or above an offset. It can also serve as an intermediate support. This universal design will work on 6, 7, and 8 diameters. Selkirk UT Chimney Pipe & Components Guide Vertical... Read More \$154.99 The Selkirk Interior Re-Support assembly allows for two different methods of chimney re-support. The first method is used at the immediate section of chimney above the upper elbow of an offset. With the appropriate Fire Stop Joist Shield in place, clamp the support band around chimney and attach with 6"... Read More Your browser does not support the video tag. | 116 Selkirk has seen the industry adapt and change over the years and has always been an innovator committed to providing the best solutions for chimney and venting applications. Our wide selection of vents and chimneys includes all fuel chimneys, type B gas vent, liners, stovepipe, direct vent, pellet flue, and medium and high-efficiency venting. Every single product in our portfolio is meticulously crafted and rigorously tested to ensure the best quality, safety, and performance in the industry and has an industry-leading warranty to back it up. With all the planning and preparation that goes into home constructions or renovations, it's nice to know Selkirk products can be trusted every time. Just contact us to get started! We look forward to working with you! Filters ?category:group1=1&category:group7=53 We are always researching, developing, and testing our products to continue to move our industry forward. Our current product offering covers a wide variety of vent and chimney and HVAC applications, delivering increased efficiency, easier installation, unmatched durability, and continuous comfort. While meeting budget expectations and efficiency demands is always important, our commitment to safety that drives every endeavor at Selkirk. We understand that our products are going into homes, offices, and other buildings where people need the safest possible products designed and engineered by experts. We go way beyond local codes and surpass even the rigorous standards of the Underwriters Laboratories Inc. We hold ourselves to the highest of standards, continually striving to exceed the expectations of our customers, and we will continue to do so over the next century. Stovepipe connects the stove to the chimney. It is typically single walled and is available in several lengths and shapes. How much stove pipe? You must determine how much stovepipe you need. Measure the distance from the floor where your stove will sit on the floor to the chimney opening in a wall or a ceiling. If the chimney opening is in a wall measure from the floor to the top of the opening and then measure the diameter of the hole. Subtract the 28 inches from the floor to ceiling measurement to accommodate the height of your stove. For rear venting stoves this is the height from floor to the top of the elbow off the back of the stove. The number you figured is the length of stovepipe you need. You will also need to know that a 90 degree elbow is about 8 inches tall and for each section of pipe you must subtract two inches from the length. Since each piece of pipe overlaps the installation of a pipe length is two inches less than when purchased. Which end is up? All stove pipe has a crimped end (male) and a non-crimped end (female). For straight pieces the end that has predrilled holes is the non-crimped female end. Stove pipe is designed so the male end always points towards the stove. Any condensation and build up inside the pipe will flow harmlessly back to the stove, rather than leak out into your home. In practice connecting two pipes together is a tight fit, but this is intentionally done for safety. Check to see that both ends are truly round. If they are not you may need a friend or rubber mallet to help squeeze the pipes together. When the pipes are connected, used the predrilled holes as a guide to drill a 1/8 inch hole in the crimped end of the mating pair and secure with the four screws. Stove Pipe Clearance For all single wall stove pipe the minimum clearance to combustible material is 18 inches. The minimum clearance may be reduced by 50% to 9 inches if suitable heat shielding is installed on the pipe or on the combustible material. We offer single wall stove pipe in 24 and 22 gauge. The lower the gauge the more durable the pipe is. Duravent stove pipe reduces wall clearances to 6 inches and ceiling clearances to 8 inches. Selkirk stove pipe reduces stove pipe clearances to 6 inches for walls and ceilings. Other Questions About Stove Pipe A Few Words To The Wise 1. Stick with one brand of stovepipe for connecting woodstoves to chimney. This ensures the most secure stovepipe connection. Learn why a good stovepipe connection is so important. 2. For most stovepipes 3 screws are required to fit each pipe connection tightly 3. New stovepipe and woodstove installations may smoke a little and emit an odor when first used. This is normal curing of the paint on the pipe. Allow ventilation of an open window or door to allow the smoke and fumes to escape during the beginning of your first wood burning stove fire. Return to top of page This site uses cookies to offer you a better browsing experience. By continuing to navigate through this site or by clicking Approve, you consent to the use of cookies on your device as described in our privacy notice. All stainless steel, solid-pack insulated Chimney for Solid Fuel, Oil or Gas applications. This all-Stainless Steel Insulated Chimney system features 1" of premium fibre (solid packed) insulation, 316 Stainless inner liner, 304 Stainless outer casing and Selkirk's Twist-Lock Coupler. 5, 6", 7" & 8" inner diameters. Selkirk Twin-Wall Chimneys are designed for maximum safety and performance. They are covered by the manufacturers limited Lifetime Warranty. Selkirk Insta-Lock Gas Vent High quality, air insulated Gas Vent for Natural and Propane Gas applications. This Double Wall Gas Vent features an aluminum inner liner and zirconium outer casing, Selkirk's non-positional coupling system with our unique Lock-Tab feature. 3", 4", 5", 6" inner diameters. Selkirk Insta-Lock Gas Vent is designed for maximum safety and performance. They are covered by the manufacturers limited Lifetime Warranty. Flexible Flue Liner Flexible flue liner for Solid Fuel, Oil or Gas applications. This flexible flue liner comes in grades 316 and 904 for Solid fuel applications and have 5, 6", 7" & 8" inner diameters. Gas flexible flue liner is available in 5, 6", 7" & 8" inner diameters. SPECIAL OFFER ON ALL RIGID AND FLEXIBLE FLUE PIPE INTERNET PURCHASES.....IF YOU HAVE BOUGHT MATERIALS ON THE INTERNET WE WILL PROVIDE YOU WITH INSTALLATION ADVICE AND A COST FOR INSTALLATION BY US*** SUBJECT TO SURVEY AND PAYMENT OF A SURVEY FEE. This site uses cookies to offer you a better browsing experience. By continuing to navigate through this site or by clicking Approve, you consent to the use of cookies on your device as described in our privacy notice.

Selkirk vent pipe installation instructions. Selkirk pipe. Selkirk vent. Selkirk sm.