
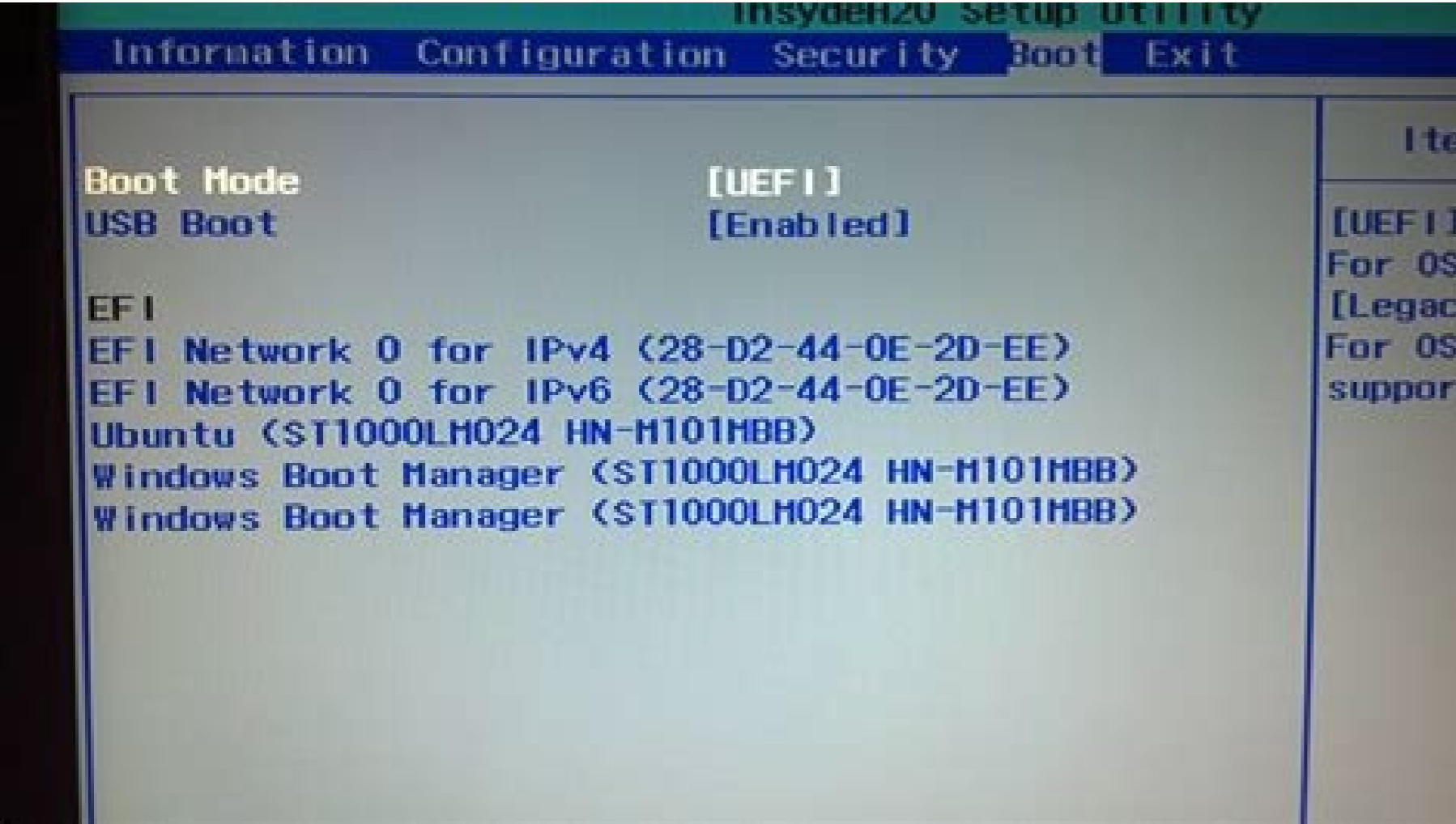
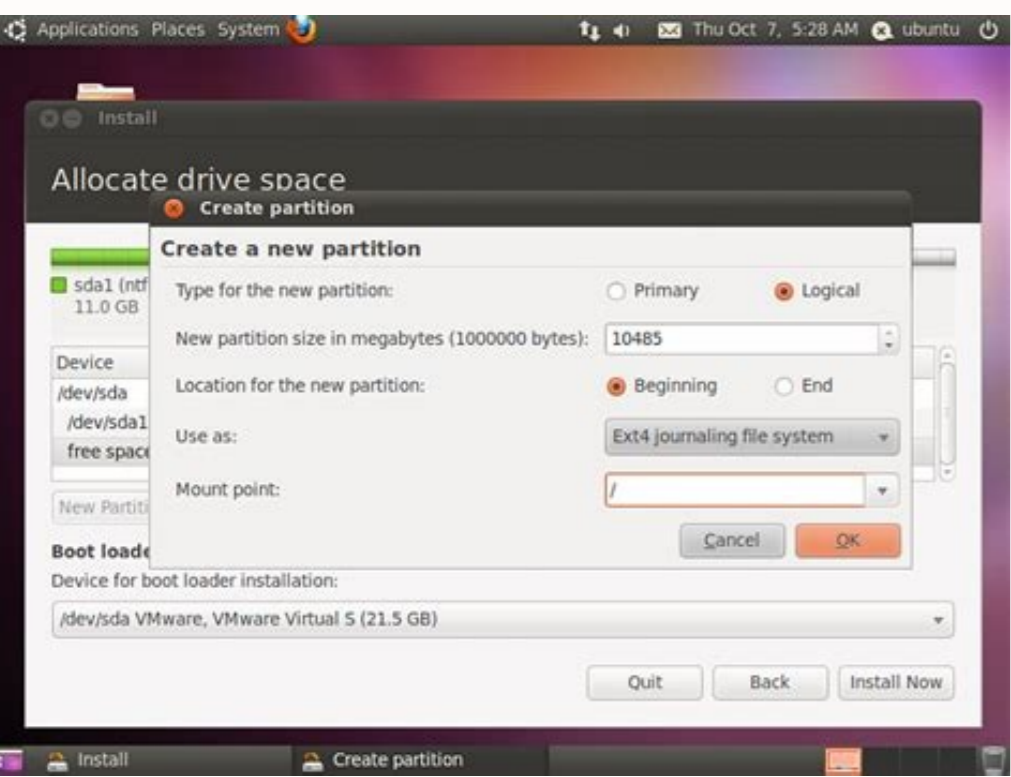
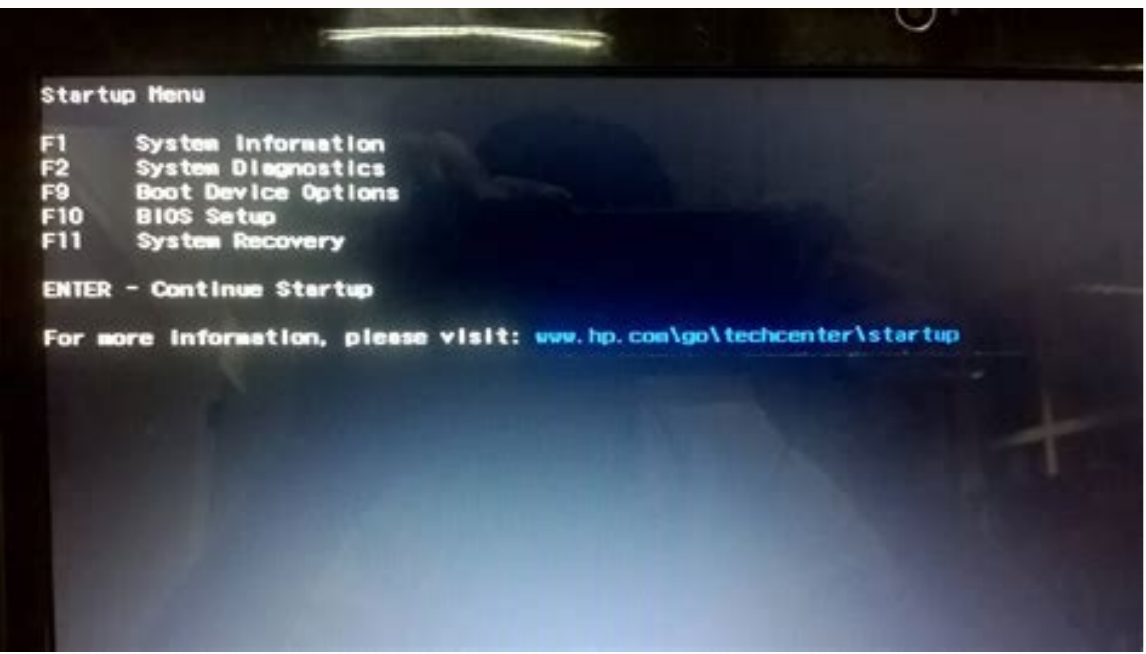


Dual boot after installing ubuntu

 I'm not robot  reCAPTCHA

Continue



In this article, we will see how to install Windows in dual-boot mode on a computer that already has Ubuntu installed. We will install Windows Ubuntu. Then patch Grub Boot to dual boot Windows and Ubuntu. A computer usually has more than one operating system installed. Users usually install both Windows and Linux operating systems on their computers in dual-boot mode. In this article, we discuss the Ubuntu flavor of the Linux operating system. Each of these operating systems will act as a host computer. The system can load one of the operating systems at a time. This means you can install Windows or Ubuntu Linux at the same time. We will install each operating system in a different partition. Usually, the user installs Windows first, then Ubuntu Linux. Once the installation is successful, the user will have the option to select one of the dual-boot operating systems. To install the operating system, the user can choose Windows or Linux from the boot menu. The user can also switch between Linux and Windows according to their needs. It can reboot the operating system you are using, select a different operating system from the boot menu and load it. Usually, everything goes well when a user installs Ubuntu Linux on Windows. Meanwhile, if a user installs Windows on top of an existing Ubuntu Linux, two problems arise: Ubuntu Linux is lost! The Boot Loader menu also disappears! The system remains only with Windows, with no trace of Ubuntu. What if you want to install Windows on your existing Ubuntu Linux? Or do we always have to go in the opposite direction? The answer is no. You can go either way. This means you can either install Ubuntu first or install Windows first. So what's wrong with installing Ubuntu and then Windows? The answer is that the Windows boot loader overrides the Linux boot loader. Since then, the ability to install Linux without Linux has been lost. So the user cannot install Ubuntu. My step is to repair the Linux boot loader (GRUB) after installing Windows using Ubuntu Linux. Let's see how to install Windows using Ubuntu in dual boot mode using boot repair by following these simple steps: Note. Make sure you have a current backup of the data stored on your Ubuntu Linux system, as this data can be lost if something happens. something goes wrong during the process. some errors in the installation process. Step 1. Select a location on your hard drive to install Windows later. There may be one or more compartments on your computer. If you have a compartment, follow the BHI CO option below. Otherwise, if you have more than one division, use the following AA option: AA (multiple compartments) Options: If you have multiple compartments, let's make two compartments. Therefore, section 1 Ubuntu OS will be OS and section 2 may contain other user data. The same can be seen as an example in the picture below: You can reduce the compartment containing data to evacuate the area for Windows. However, you cannot replace the division size with Ubuntu system files. To change the size of the second part, as shown on the screens below, open the Dis from the Dis from the Ubuntu Program menu: Make the following steps to change the size of the compartment where Ubuntu is not installed: A. Part B. Separate the division C. Click the Setting icon click D'1 click D'1 . Choose to change the size. Full Size Size Size Sigger F. Click the "Change Size Size" button after 2 as shown in the green box: Changing the size and relief Disk program. Windows operating system. Follow the above process in the video: How to change the size of the secondary compartment to divide the area in Ubuntu aba's (a partition) option: If your system has a compartment, the above method does not work. In case of a partition, the Ubuntu system files will be in this separate compartment. System files will be used using ubuntu. Thus, the amount of disk will be busy. It is not possible to remove the borrowed disc volume. The system cannot change the size of the installed or busy disc. Therefore, we need an external coefficient to get rid of a compartment containing the Ubuntu operating system and change its size. To do this, let's run the computer from Boot Ubuntu Flash Drive and use the GParted tool. If necessary, check one of these ways of creating an uploaded ubuntu Note: Windows System Home - Up Disk Development Tool in the current Ubuntu system: Whale Ether software, Rufus software from Ubuntu Flash Drive will blink: Place your Ubuntu Flash Drive on your computer and system Restart. Restart F10 (DEL or F9 or F12 or ESC) to rewrite to enter the BIOS installation. You can try other keys according to car construction and model BIOS setup. Select USB Memory Boot as a starting device from the start options. Save and close. The system is restarted. Press F9 (or Del, F10, F12 or ESC) during the system restart to display the start menu. Depending on the brand and model of your computer, you can try out other keys to call up the start menu. Select the flash drive as a starting device from the start menu list and press the Enter key. The Ubuntu configuration is loaded by the flash drive. Click in the Ubuntu settings on Ubuntu Trial, as shown in the next up session: Ubuntu Linux Live is loaded by the flash drive. Start the GParted app: Open the app in this live session via the app menu. The GParted symbol looks like in the picture below: GParted is open and shows the hard drive with its capacity and its subject. Click on a bucket to select it. Then click on the "Change" button, as shown in the image below: Click the "Change size" button. A dialog box with options for changing the partition size is open. You can change the size of the bucket by entering the size of the free space or the size of the new partition in megabytes. You can also use the slider to change the size of the segment, as shown in the figure below: Pull the slider to make the segment smaller and to release space as an unspeakable place in accordance with your requirements. Note the new steering sheet size and the new unpaid space, which is released from the compartment. Then click on the Edit/Move button, as shown in the image below: Usurious space is grayed out. We will use this non-reserved location to install Windows 10. Click the "Use" button to save the size changes. In the figure below, the unclean space and the "Use" button are marked. Click "Take over" to save the changes in the pop-up dialog and save the changed configuration for every bucket. Wait for all successful actions on size change. Then close the GParted app. Restart the system. Remove the Ubuntu flash drive from the computer when Ubuntu-Live streaming is required before restarting the system. Restart your computer to look for hard disk changes: Then the system starts from your computer's hard drive and invites Ubuntu Linux. You can register with Ubuntu and check the compartments on the hard drive. The above should let the Linux compartment collapse. It also has to create an unshaped place. The same is shown in the picture below in the green field for illustration: Take a look at the above process in the video: How to change the size of the main bites and cancel the assignment The first step of Ubuntu should now be successful. You will be ready with the untrained place on the hard drive. We will use this location to install Windows 10 as a double boot host system. Step 2. Windows flash drive. Install Windows after Ubuntu to release the untrained boot point from Windows boot disco. Restart the system. Boot from Windows flash drive. Press F9 (or Del, F10, F12 or ESC) to display the boot menu. Select Flash Drive as a boot device in the boot menu list and press Enter. Note. Check how Windows create a boot for Windows flash drive in the existing system. You can also check how to create a bootable Windows flash drive in the current Ubuntu Linux system. The Windows 10 installation setting is loaded from a flash drive. Select basic information on the Windows Installer greeting screen, such as language, time, currency format and keyboard or input method. If the option is not specified, continue with the default values and click Next to continue. Click the Install button immediately to start the installation process. The installation process will make you activate your Windows Operating System copy. You can see that Windows is not a free operating system. You need to purchase a license to use it. The license can be purchased and activated later with the product key specified at the time of purchase. Currently, I don't have the product key to continue installing Windows. Special Note: Always buy Windows or any software from an authentic source. You can always buy Microsoft Windows DVD online from Amazon directly from your Microsoft account. If you wish, you can check the available Microsoft Windows DVDs online at Amazon. Choose the Windows version you want to use - Windows 10 Pro is the best for professionals. Agree the license terms and click Next to continue. Select the checkbox à I agree with the license terms. Then click Next to continue. Does the Windows Install Program ask what type of installation you want to make? Since this will be a new installation, select a customized installation in the installation type à instead of updating. Now the most important step. Windows setup will ask where to install Windows? Select the partition you want to install in Windows: As you can see in the picture below, the first partition, i.e., partition 1 on disk 1 is the root compartment that is installed in Ubuntu. Also, an unclaimed space in this example, you can use 500 GB). Select the wrong space and click on the new one to create a new section from this indefinite website for installing Windows. When he was asked, click on the program, and then cars to create a new section. Installation of Windows will create a section of the system (about ~ 500 MB) and the user section (balance space). The same is shown below in the photo: Select the recently created section that is not a section of the system, and click the next to continue the installation. The installation process will begin. Wait for the copy of Windows configuration files, and copied configuration files are ready for installation. The installation program will install Windows from installation files. If the system is connected to Windows Online, you can also install updates. Wait until the installation process is completed. Note. During the installation process, the computer can automatically work several times. Keep a flash drive on your computer. Do not throw a single key to restart the system. Thus, you can start the system with a flash -dissection, and a new installation will begin. Configure Windows after installing: the configuration will continue to run services and prepare the devices after installation. The system can restart several times during the configuration. After configuring the configuration, select the area, select the keyboard layout and add the secondary keyboard layout. If there is no special requirement, otherwise take the planned options. You can install Windows for personal use, and then add organizational information. If you have a Microsoft account identifier, you can send them. Otherwise, continue your account, and then create an online account. You can choose one of the Microsoft Group account login. Otherwise, click "No" if you are not available in the Microsoft Group account, you can add such accounts later. Enter your name and click "Continue". Create a strong password, and then secret questions. Click APT to choose Cortana for a digital assistant using Windows operating system. Select "Privacy Settings", otherwise control the default parameters if there is no particular choice. Your Windows 10 operating system will be ready for use. Open the file researcher to check the disk section. You will see C: a section with an accessible capacity. Also open the drive control in the computer control to check the disk sections. All sections of the disk will be visible here. Nevertheless, the Windows Files conductor will not be visible in the System Linux section. Close Management. Restart the windows. You will notice that the Windows operating system is loaded without being able to switch between Ubuntu and Windows. This is because the Windows boot loader overwrites the existing Linux boot loader. Let's follow step 3 to repair the Grub Boot Truck and restore Ubuntu OS. 3rd step. Ubuntu Grub Loader Repair Re-insert Ubuntu flash drive and start Windows. Boot from Ubuntu flash drive by selecting the option in the boot menu. Press the F9 (DEL, F10, F12 or ESC) to display the boot menu. You can try other keys and according to your computer brand and model. Ubuntu configuration will be loaded from a flash drive. Click "Ubuntu Bands". The Ubuntu live session will be loaded from a flash drive. Open the terminal in a direct Ubuntu session. Add the boot repair repository and update the package database by entering the following commands at the terminal: Sudo Accessories-Repository PPA: Yannubuntu/Boot-Repair Sudo APT APT APPLY IN PAGE DATABULTS Enter this command. Install start repairs: Sudo. Boot Review Installing Enter your root password and press yà or Enter when requested. When the boot repair is installed, run the boot loader to print the following command: boot-repair. The boot repair program will open by calling the terminal. Click the "Recommended Repair" button, as shown in the picture: Wait for the launch repair process to complete. You can click No when you are required to load the boot information, paste unwanted content. If errors occur during the process. You can click on the road to save and share errors during the process. Rolling the boot will show a summary of the boot information following the repair of the loader at the GRUB boot. Close the summary reviews and close the launcher. Restart your computer: Remove the Ubuntu flash drive from your computer when requested and press Enter. Wait for the system to restart. Reboot system will show the boot loader to choose between Ubuntu and Windows operating systems. The same is shown in the picture below as an illustration: As shown above, the first option is for the start of Ubuntu, while the last two options are for Windows. Select the first option and press Enter to load Ubuntu OS. The existing Ubuntu operating system will be properly loaded from the hard disk. Restart the system. The boot truck will be re-loaded. To load the Windows operating system, select one of the options as shown above. A practical demonstration of the above process in the following video: Note. The video above also shows how to exchange files between Windows and Ubuntu on a dual-boot computer. We hope the above information was helpful to you. Unfortunately! Information is constantly updated. Follow us on social media, subscribe to our blog or subscribe to our YouTube channel to be aware of the latest updates. Update.

