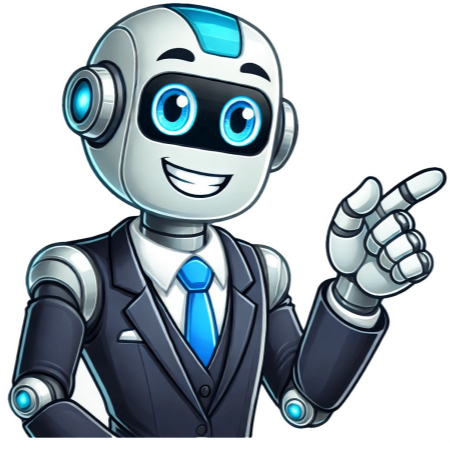


I'm not a bot



The 4C error code indicates the Samsung washer has detected an issue with the water supply. A common reason the 4C error is displayed is because a water hose has a blockage or is bent. See the helpful tips below to fix and clear this error code. 4C Error Code - Samsung Washer What can cause the 4c or 4E error code on a samsung washer? Here are 4 reasons why the error code can be displayed and how to fix and get the error code cleared/reset. Samsung washer 4C (4E) error code causes: Water supply hoses are bent. Water supply valve is not fully open. Mesh filter is clogged. Detergent drawer is blocked. Step 1 - Inspect the water supply hoses Having an issue with the water supply could mean the water pressure is not as high as needed. This usually means a water supply hose at the back of the washer is bent or blocked. When this occurs, the washer does not get enough water and therefore displays the error code 4C or 4E. Hint: Water pressure to the washer needs to be from 0.5 bar to 8 bar. How to inspect the water supply hoses on washer? Unplug the washer from the power outlet. Slide the washer forward to get access to the back of the washer. Inspect the water supply lines to be sure they are not damaged, bent, or blocked. If the water lines are bent, straighten them out, or replace with new hoses. Step 2 - Inspect the water supply valve Inspect the water supply valve at the wall where the water hoses are connected to and be sure they are fully OPEN. If the water supply valve is not fully open and unable to supply water to the washer, not enough water is entering the washer and the error will display. Turn the water valves fully open, both hot and cold, to be sure the washer gets the full amount of water needed. Step 3 - Inspect and remove gunk from the mesh filter Remove any gunk on the water hose mesh filter to allow water to freely pass. (HINT: The water hose mesh filter is located between the water hose and where it connects to the washer) Mesh filters for a washing machine CLEAN THE MESH FILTERS UNDER HOT WATER Mesh filters for washer BE SURE THE MESH FILTERS ARE CLEAN AND PROPERLY INSTALLED Step 4 - Inspect and remove residue from the washer soap dispenser drawer The 4C error message can be shown if a blockage is found in the washer soap dispenser drawer. Remove the dispenser drawer and clean it under hot water in the sink. How to Adjust the Water Pressure in A Samsung Washing Machine Need help with the 4C error code? Please let us know your Samsung washer model number in the comments below. Please tell us the issue you are having with the error code and any other issues you are having with the washer itself. 14K Views Updated: February 20th, 2022 Samsung washing machine error codes display before or during a cycle of laundry, and it's enough to confuse any homeowner. The error code on your Samsung washing machine relates to a specific problem that you can identify and fix. Whether it is identifying the code or troubleshooting it, let's take a look at what the error codes on your Samsung washing machine mean. Don't you hate when you throw a load of clothes into the washer and nothing happens? Even worse is when you full Samsung washing machine dies mid-cycle. Then, you're left with a heavy bundle of sopping wet, half-clean clothes (and a machine full of water).If your Samsung washing machine isn't working, it conveniently displays an error code to help explain the problem. These codes can signal an array of issues, ranging from very simple to more complex. Once you identify the code, you can sometimes fix the problem yourself; other times you'll need to call a pro.When your Samsung washer starts to flash random numbers and letters, pay attention. Your machine is trying to tell you that something isn't right. If you're lucky, you'll be able to fix the problem without having to deal with a service call (and the extra fees). Complete List of Common Samsung Washer Error Codes and What To Do About Them There are loads (no pun intended) of error codes when it comes to your Samsung washing machine. Typically, several different codes can signal a similar issue across various models. For example, many codes that begin with "E" are from older Samsung models. Furthermore, other numbering systems use several different codes to describe the same issue. This is a look at the general Samsung error codes; for your specific model's codes, consult your user manual. Check out this video to learn how to run a diagnostic test on your Samsung washer. Codes: 1E, 1E, LE1, 1C, LC, LC1, 1 C, 1 LC, E7, E9, 11E - Water Level Error or Leakage These codes signal that there's either an issue with the water level sensor, a low water level, or a leak. 1E, 1C, E7 - Water Level Sensor Verify that the water hose connected to the sensor is still connected. Sometimes, this hose can come loose from the drum due to vibration. Another possibility is the water hose is clogged, so the sensor cannot measure the water level properly. Detach the hose and blow into it to check for a clog. If the hose seems fine, you might just need to replace the sensor. 1E, LE1, E9, 11E, LC, LC1, 1LC, 11C - Low Water Level or Leak (Typically LE1 or LC1 signal a leak) If your Samsung washer displays one of these codes, search for signs of a leak. If you find a leak, fix it or call a pro to repair it. This should erase the error message. If your water level is low, check all of your supply and drain hoses to ensure they are not crimped. Do not remove any screws that hold your drain hose in place. If the holder for the drain hose is missing, you need to call for service. Water Level Errors- Additional Steps to Try Try running an empty cycle with no detergent and see if any suds appear in the machine. If so, it means that too much detergent or a non-HE detergent was used in a previous cycle. Continue to run empty cycles until the suds disappear, then see if this fixes the error code. If the code returns after all of your efforts, you need to call for service. Codes: nF, 4C, 4E, 14C, E1, 11E - Machine Not Filling These codes signal an issue with water not filling the machine appropriately. In the case of code 11E, there is a low water level detected. Two potential problems can cause this issue: a faulty water inlet valve or the water tap is off. First, ensure your hot and cold water supply hoses are connected correctly and not crimped or bent. Also, ensure that both supply valves are completely open. Additionally, verify that the drain hose is inserted correctly, no more than 6 inches into the drain pipe. Unplug the machine and remove the washer's top cover. Use a multimeter to test the inlet valves for continuity. If you get zero continuity it means the valve is defective. If all of the above is correct, unplug the machine and flip the circuit breaker. After a minute restore power and try to run a cycle.If the problem is not resolved, call for service. Codes: nF1, 4C2, 4E1, 4E2, 4C2, 4E4, CE, EB, H1, HE, HC, 14C2 - Hot or Cold Error These codes typically don't indicate a need for service. Instead, more than likely, your hot and cold supply hoses are connected to the wrong inlets. Check your supply hoses and make sure that red goes to red and blue goes to blue. If this doesn't solve issue, call a repairman. Codes: nJ, 5E, SE, 5C, 5C, 15C, E2 - Water Not Draining If your Samsung washer is flashing one of these codes, it signals a drainage problem. It could be that your machine is draining incorrectly or not at all. Check the washing machine drain hose and the filter. Make sure everything is connected properly and tightly. Also, ensure the hose is not bent or clogged. Codes: OE, OE, OF, OC, 10C, 10C, E3 - Overflow Error These codes mean your washing machine has too much water in it. To fix the problem, try restarting your washer. Codes: 9C1, 9C2, PF, 3E*, 2E, 9E1, 9E2, UC, 19C1, 19C2 - Voltage Error If you see one of these codes, there's something up with the electrical current going to the washing machine. Ensure your washer is plugged directly into an outlet and on its own circuit. Do not use an extension cord. A PF code represents "Power Failure." It can also occur if there was a power outage, the machine became unplugged, or you tripped a circuit breaker. You might also see this code if your washer model doesn't originate from the country that it is in. This is because power grids vary from country to country.If the code persists after checking the power source and restarting the machine, call for service.*Note: 3E can signal a motor error in some models; consult your user's manual if you see this code. Codes: dS, d5, FL, LO, L0, dE, dE1, dE2, dC*, dC3, dC1, dL, 1dC, 1dC4, 1dC1, Ed - Door Error Any of these codes can represent a problem with the main door of your washer, except dC3. dC3 represents an issue with the add-door. This is the small, extra door located in the washer's main door. In some cases, dC can also signal an issue with the add-door.Usually, these door codes mean the door is not closed and locked. Ensure that there is nothing caught in the door, and the latch is secured correctly. The same goes for the add-door. Sometimes, these codes can appear even when you aren't washing anything. This is usually because the Child Lock feature is enabled and there is water in the tub.If you have a FlexWash machine, the 1dC4 code signals that the rubber button by the latch is missing. In this scenario, if you simply need to replace the button or latch is damaged, or the code continues, request service.*Note: On some models, dC represents an Unbalanced Load Error. Consult the manual for your machine to determine what this code means for your specific model. Codes: 5Ud, 5UD, 5C, 5d, SUDS, 5Ud5 - Excessive Suds Error You likely don't need service if you see this code. Your machine is simply waiting for excess suds to dissipate and then it will continue with the cycle. If you see this code, it likely means you used too much detergent or the wrong detergent. Codes: dc*, Ub, U6, U7, UE, 1 Ub, 1U6, E4 - Unbalanced Load Error If the items in your machine become off-balance, you might see one of these codes. Your machine can be unbalanced due to being over- or under-filled, or when you are washing very bulky items. The UR code means that your machine will attempt to add water to balance the load and try again. The other codes mean the machine will quit mid-cycle. If you see one of these codes, pause the cycle and check your washer drum. Redistribute the items around the tub to balance the weight and remove bulky items if necessary. If your machine is too empty, you might need to add some items. Finally, verify that the current cycle selection matches what you are trying to wash, and continue or restart the cycle.*Note: On some models, dc represents a door error; consult your manual to determine the correct definition for your model. Code: FE - Fan Error The fan is not operating normally. You need to call a service center for this issue. Codes: Cb, C6 - Calibration Mode These codes simply signal that the washer is in calibration mode. This means that it is recalibrating the washer's weight detection ability. Your washer detects the weight of items in the drum to determine how much water to use. Calibration mode usually lasts about one to three minutes and stops by itself. However, it only works correctly if your washer is empty. If the code lingers, ensure your machine is empty, remove any items, and restart calibration mode. Code: Cl - Child Lock Newer Samsung washer models show this code when the Child Lock feature has drained the water from the tub. This happens when the water level is unsafe and the door is open. If you see this code, turn the washer off then back on, or you can turn off the child lock feature. Codes: Hr, 1HC, HE1, HE2, HE3 - Water Heater / Steam Function If you see HE1 or HE2, this signals an issue with the water heater or heating elements in your washer. Likewise, Hr and 1HC represent a heater issue. You need to contact a service center. HE3 represents an issue with the steam function not operating normally. You need to call a technician for this issue. Code: HOT - Machine Is Too Hot This code simply lets you know your appliance is too hot and needs to cool down. It isn't an issue or a problem. Samsung Washer- Other Error Codes There are a vast number of errors that relate to sensors and other electronic components of the Samsung washing machine. If any of the following errors occur, restart the cycle. Turn off your washer for about three minutes. Then, turn it back on, and restart the cycle. You can also attempt this if you see an unfamiliar error code. If any of the following error codes persist after restarting, call for service. 18:J - Model Option Error This code appears with the FlexWash washer. It usually represents a communication issue between the two control boards behind the front panel. Your best option is to contact a technician for assistance. 3E*, 3C, 3E1, 3E2, 3E3, 3E4, bE, 6E, E3, 13C - Motor Error *Consult your user manual for the specific 3E code meaning. The bE and 6E codes represent a motor speed sensor error. These codes can signal an overworked or faulty motor, tachometer issue, or controller error. Request service to diagnose the problem. AE, AE6, AEB, AC6, ACh, AC, AC4, AC3, AC5, AE8, AEB, AE4, AE3, AE5, 1AC6, 1 AC, ACT, 13E, AE3 - Communication Error The control module is having trouble communicating with the information display board. The circuit could be open. You can check it with a multimeter. It could be a wiring issue, or you might just need to tighten the connections and contacts. Conversely, the control board or information display board could be faulty or malfunctioning. Either way, you need to contact a service center. The AE3 Code can signal a DR Ready Modem error. 8E, 8E1, 8E2, BE, BE1, BE2, 8C, BC, 8C1, 8C2, BC1, BC2, 1 8C, 1 8C, 1BC, 1BC1, 1BC1, 1BC2, 1BC2 - MemS Sensor Error MemS is short for Micro Electro Mechanical Systems. You can try restarting your machine but might need to call a technician.Note: In some models the 8E and BE code can represent a vibration sensor error. In other models, BE2 or 8E2 represents a jammed button error. Consult the user manual for the correct error code definition. E2, BE2, GE2, BE2*, 8E2*, 12E, 14E, 18E - Jammed Button Error These codes mean a button on the panel is stuck. Turn off the machine, but before restarting, work each button back and forth until all buttons release. If any buttons are damaged or the code persists request service. 1E, E1, 1E2, 4E3, EC, EC - Temperature Sensor Error These codes signal that the controller isn't getting a signal from the temperature sensor. Check all contacts and connections. The temperature sensor could be faulty, or you might need a new controller or heating element relay. It's best to call a tech to diagnose the issue. HC, HE, HE1, Hr, 1 HC - Heater Error The water in the tub is heating too much, too slowly, or not at all. The voltage could be too low, in which case you need to call an electrician. Or it could be a faulty heating relay, temperature sensor, or controller. It can also signal a burnt-out heating element. PC, PE / PC1, PE1 - Clutch Position Error / Clutch Hall Signal Error The clutch controls the spinning of the tub and the agitator. In some cases, the clutch can be out of position or have a signal issue. When this happens, the clutch can't work properly. For example, it doesn't release the brake to let the washer spin. You can try restarting the machine. Power off the machine, and check the sensor and wires before restarting. If the code persists, you need to call a tech. 7E - SilverCare Error Samsung's SilverCare technology helps remove bacteria and mold from inside the washer. This code signals an issue with this system. Check all the connections to the PCB (main control board), then restart the machine. You might need to replace the SilverCare kit; alternatively, call for service. 1E, SF, 5F, SF1, SF2, SF3, 5F1, 5F2, 5F3, 1SF, Sr, 5r - System Error The Sr and 5r codes specifically signal a system relay error. Try restarting your machine to see if it resets and erases the code. If not, call a technician. The cost of repair depends highly on the issue. A simple fix may only cost you about \$100, whereas more complex or major problems can cost over \$400. It's essential to get a few quotes for any large repair. Before paying for service make sure your machine isn't still under warranty. Or, if you are knowledgeable and handy, you might be able to simply purchase parts and do the repair yourself. However, keep in mind that this could potentially void any warranty on your washing machine.Next, consider the age of your current machine. If your machine is older and the repair costly, you might want to consider purchasing a new washer instead.Where can I find a list of Samsung washing machines involved in a recall?In 2016, about 2.8 million Samsung washing machines were recalled due to a safety issue. You can find more information about this and other recalls by visiting the Consumer Product Safety Commission. Related Guides Published January 1st, 2021 6:00 PM A problem with the water supply is usually the result of low water pressure or a low flow rate on the mains water supply to the machine. This means that the water feeding into the machine is not flowing with enough force. The water pressure must be between 0.5bar and 8bar. Fully power off and unplug your washing machine at the mains. Move the machine forward to give access to the water hoses. Check that there are no kinks or bends in the water hose connected to the machine and make sure the hose is not damaged.. Reddit may still use certain cookies to ensure the proper functionality of our platform. For more information, please see our Cookie Notice and our Privacy Policy. A 4C or 4E code on your Samsung washer means the machine detected a problem with the water supply. It could be a temporary glitch or your water pressure is weak, the detergent dispenser is clogged or the main hose is kinked or blocked. Reset the washer. You might be seeing the error due to a simple glitch and nothing is actually wrong. Reseting your washer will clear out the glitch: Unplug the washer from power and wait 5 minutes before plugging it back in. If you still see the 4C or 4E code when you turn the washer back on, you may need to do more troubleshooting. Advertisement Clean the detergent dispenser. Using more than the recommended amount (there's an indicator inside the lid), or a non-HE detergent can lead to clogging, which leads to either water overflow or a weak water flow. Any of these outcomes can produce a 4C/4E code. Clear out the clogged dispenser to get rid of the code without having to buy a new part. Start with the washer off and unplugged from power. Remove the detergent dispenser drawer. You'll find a lever inside the drawer that lets you remove it easily. Take apart the drawer. There are two components: the softener compartment and the detergent section. Use warm water to clean the parts. Use a tool like a tooth brush to clean nooks and crannies that you can't reach inside the washer. Put all the pieces back together once they are clean and dry, then slide the drawer back into the washing machine. Set the washer to a "Rinse" cycle without laundry in it to complete the process.[1] Check that you have sufficient water pressure. Anything lower than the 20-120 psi range and your washer will display 4C or 4E. Here's how you can test your water pressure: Pull the washer away from the wall to access the main water supply valve. Use a towel or something to catch any water that drips. Disconnect the valve from the hose. Attach a pressure gauge to the valve and open it completely. Make sure that the reading on the gage is in the 20-120 range. If the weather is colder and there are uninsulated pipes in your house, note that you might be dealing with a frozen or burst pipe. Contact a plumber immediately to deal with any frozen or burst pipes and that might get rid of your 4C/4E code on the washer. You can also call your utility company to see what your water pressure is. Advertisement Open the valve completely. If the tap isn't completely open, you'll experience some water pressure issues. Follow these steps to find and open your tap fully: Unplug your washer from power and pull it away from the wall. Turn the water tap counterclockwise as far as it will go. Reconnect the washer to power and see if the code is gone. Clean and straighten out the inlet hoses. A clogged or kinked hose that draws water from the supply valve into your washer will restrict the flow of water enough to trigger the 4C or 4E code. Here's how to clean the hoses: Turn off the washer and unplug it from power. Turn off the water supply valves for cold and hot water. Pull out the washer from the wall. Make sure the hoses aren't bent, pinched, or kinked. Place a towel or rag on the floor to catch water that leaks while you clean the hoses. Remove the mounting hardware that keeps the hoses at the back of the washer. Disconnect the hoses from the water supply valves. Look through the hose to find any obstructions. Use tools like high-pressure water or a long brush to dislodge obstructions. Reconnect the hoses to the valves and your washer and turn the water back on. Use this time to check for any leaks. Plug the washer back into power and check if the 4C/4E code is gone by running a short cycle. Advertisement Clean the mesh filters. If the mesh filters are clogged, water flow is restricted and can cause the 4C/4E code. Clean these twice a year to keep the filters in good shape for longer. Turn off the water supply to the washer. Use towels or a bucket to catch water that spills during this process. Disconnect the water hoses from the back of the washer. Look inside the valves to find the mesh filters. Remove the mesh filters using a small tool, like needle-nose pliers. Clean the filter with warm water or a toothbrush. If the filter looks damaged or excessively worn down, buy a new one that fits your Samsung washer. Once clean, replace the filters in the valves and reconnect the hoses to the back of the washer. Turn the water supply back on and run a short cycle to see if the 4C/4E code is gone.[2] Replace the water inlet valve. This piece regulates the flow of water into the machine; when your washer needs water for a cycle, the control board sends an electrical signal to the inlet valve. If the valve is broken, it won't be able to control the flow of water, resulting in a 4C/4E code. Follow these steps to replace the water inlet valve. Unplug the washer from power and turn off the water supply. Pull the washer away from the wall so you can work behind it. Line the floor with towels to absorb any water that spills. Disconnect hoses from the back of your washer. Unscrew the screws securing the rear panel of the washer to reveal the inlet valves. Unplug the wire connectors secured to the faulty water inlet valve. Remove screws holding the faulty water inlet valve. Carefully remove the faulty water inlet valve. Place the new water inlet valve in the same place, then replace screws, and reconnect wires. Replace the rear panel on the washer and screw in any remaining screws. Reattach the hoses to the back of your washer and run a short cycle to see if the 4C/4E code is gone.[3] Advertisement Ask a Question Advertisement Thanks Thanks Show More Tips Advertisement This article was co-authored by Trevor Storey and by wikiHow staff writer, Darlene Antonelli, MA. Trevor Storey is an Appliance Technician based in Santa Cruz, California. With over a decade of experience, he is the owner of Santa Cruz Appliance Repair, providing appliance repair and maintenance services for all major appliances. He also offers propane conversion, vent cleaning, and DIY virtual repair consultations. Santa Cruz Appliance Repair received a Quality Business Award in 2024 as the Best Appliance Repair company in Santa Cruz, with an over 95% quality score. Trevor received a B.A. in Environmental Studies from the University of California, Santa Cruz. This article has been viewed 2,077 times. Co-authors: 5 Updated: March 8, 2025 Views: 2,077 Categories: Washing Machine Repairs | DIY Print Send fan mail to authors Thanks to all authors for creating a page that has been read 2,077 times. A Samsung washer can only work correctly if it receives a steady supply of water. So, if the machine is displaying a 4C error code, that means there's a problem with that water supply and cannot function as it should.The 4C error code on a Samsung washing machine points to a problem with its incoming water supply. The root cause could be a lack of water pressure, a blocked or kinked water supply hose, or a blocked water hose mesh filter. The same error code could also appear if there is a blockage at the detergent dispenser drawer.In this guide, we'll dive deeper into what causes the 4C error code to appear on your Samsung washer and what you can do to fix it. Suppose your Samsung washing machine is displaying the 4C error code. If that's the case, that means there's a problem with the machine's incoming water supply. This error code will get triggered when water does not flow into the machine quickly enough. The most likely reason behind this is that the water pressure or flow rate is too low. Ideally, the incoming water pressure must be between 0.5 and 8 bar for the washing machine to work optimally.Several causes will trigger your Samsung washer to display the 4C error code. Externally, the problem could be with the incoming water supply or the water supply hose and its mesh filter. Internally, the detergent dispenser drawer could also be to blame.What it is: Before troubleshooting your Samsung washer's components, the first step you must take is to ensure that the incoming water supply is free from any problems. By this, we're referring to your household's water supply to the tap that supplies the washer with water. How it fails: There are several issues that can affect your incoming water supply. Firstly, check that your household is not experiencing a water supply disruption. You can do so by opening the kitchen sink tap and checking for water.Next, check the tap that leads to your washing machine. It's possible that the tap isn't open all the way, thereby reducing the flow of water to the washer.Lastly, your local climate could also be to blame. For instance, water pipes can freeze up during winter and prevent water from flowing to your washing machine. How to fix: The solution to this issue will depend on the root cause. Assuming there is no water supply disruption, make sure that the water tap that supplies your washer is open all the way. If the pipe is frozen, keep it open and gently warm it up using a hairdryer.Alternatively, you could also consult a qualified plumber to resolve any internal water flow problems.What it is: Your Samsung washer connects to the water supply tap via a water supply hose. This water supply hose is detachable, with one end connected to the tap and the other to the washer's inlet valve. How it fails: Assuming there are no problems with the incoming water supply, the next part to troubleshoot is the water supply hose. If the 4C error code appears, the hose is likely blocked or kinked. That hose can become kinked when the washer is placed too closely against the wall or if it was wrongly positioned. It can also become blocked if a buildup of dirt and debris forms inside it.How to fix: To fix this, first shut off the water supply to the washer. Then, pull the machine away from the wall behind it so that you can check for any kinks in the hose.Next, shut off the water supply and place a cloth underneath it. You'll need to detach the hose from both ends and check it for any blockages. You can test and flush the hose at your kitchen sink by holding it up to an open tap.Once you've cleared any obstructions, reattach the hose to the washing machine and its nearby tap.What it is: A small mesh filter is located at the part where the water supply hose attaches to the back of the washing machine. That mesh filter is designed to capture any dirt or debris that comes through the water supply hose and prevent clogs inside your Samsung washer. How it fails: Here, the 4C error code could get triggered due to the mesh filter getting clogged. This problem can happen over a long period as the filter gets saturated with dirt and debris. When that happens, water will not flow fast enough into the washer, triggering the 4C error code.How to fix: The solution to this problem is straightforward. Firstly, shut off the water supply to the washer and place a cloth underneath it. Then, unscrew the water supply hose where it connects to the washer.Using a pair of tweezers or pliers, gently remove the mesh filter at the washer's inlet. Wash it in the sink and brush off the dirt or debris trapped there. Then, place the mesh filter back into the inlet.To prevent this from happening again, repeat this process twice a year.What it is: The detergent dispenser drawer is located on the front of the washer, and it is removable. Water flows through this drawer and carries the detergents and fabric softener that you load into it. How it fails: After a long time in use, the detergent dispenser drawer can get blocked. Typically, this happens due to a buildup of excess detergent that gradually becomes more significant over time.At some point, the blockage can become severe enough to affect the water flow into the drum, triggering the 4C error code.How to fix: Firstly, remove the dispenser drawer from its housing. You will not require any tools to do this. Then, check it for any foreign objects or buildups that could obstruct water flow. Finally, clean the drawer thoroughly under the kitchen tap and wipe it clean with a dry cloth.Lastly, slide the dispenser drawer back into its housing.To clear the 4C error code on your Samsung washing machine, you must first resolve the root cause using the steps described above. If not, the code will continue to show regardless.Once you've completed troubleshooting the issue and fixed the root cause, then you can clear the 4C error code by performing a reset on your Samsung washer.To do so, follow the steps below.To reset a Samsung washing machine, follow these steps:Firstly, unplug your washer from its socket, or turn off the dedicated circuit breaker at your main electrical box.Next, wait for one to five minutes as the washer discharges any electrical charge it's retaining.Lastly, power the washing machine up by reconnecting its plug to the wall socket or turning on the dedicated circuit breaker.Once you've completed these steps, you can rest assured that your washing machine has been successfully reset.After you've addressed the problem and reset your Samsung washer, you might want to confirm that the 4C error code has indeed been cleared. You can do this by entering the washer's diagnostic mode to check if the 4C or other error codes are still registering in the washer.To enter diagnostic mode on your Samsung washer, follow these steps:First, start with the washer turned on. Then, press and hold the Delay Start and Soil Level buttons. The buttons might differ depending on your Samsung washer model, so please confirm by checking the user manual.Next, keep holding those buttons until you see all zeros on display and hear a chime.Then, press the Soil Level button until the letter D appears on display. That means the machine has entered the error code diagnostic mode.At this point, you can turn the jog dial to cycle through however many codes the machine has to show. Once you've reached the letter D on display, that means you've viewed all current error codes (if any).If you do not see the 4C error code, that means you've resolved the issue. The most effective way to test your Samsung washer thoroughly after a repair is to run a complete wash cycle from start to finish. You don't necessarily need to load anything in the washer to do this, so testing with an empty drum is perfectly fine.To do this, you can simply choose the shortest cycle available, such as the Rinse+Spin cycle available on many Samsung models.Since the 4C error code refers to an issue with the incoming water supply, you'll want to pay extra attention during the beginning stages of the wash cycle. Then, when you see that the washer fills up and begins the cycle without any problems, you can rest assured that the problem has been entirely resolved. The 4E (4C) error code indicates that the washing machine has detected a problem with the water supply. The most common reason for this error is a blocked or kinked water supply hose. Try the below troubleshooting steps to resolve. 1 Check the water hose A problem with the water supply is usually the result of low water pressure or a low flow rate on the mains water supply to the machine. This means that the water feeding into the machine is not flowing with enough force. The water pressure must be between 0.5bar and 8bar. Fully power off and unplug your washing machine at the mains. Move the machine forward to give access to the water hoses. Check that there are no kinks or bends in the water hose connected to the machine and make sure the hose is not damaged.. 2 Check the water supply Check that the water tap connected to the washing machine is open to full. 3 Clean the water hose mesh filter at least twice a year to prevent build up. Turn off the water supply Disconnect the inlet hose from the water supply Disconnect the L-shaped arm from the washing machine Gently pull out the mesh filters Rinse the mesh filters under running water until they're clean Reinsert the mesh filters Connect the hose again, first to the washing machine and then to the water supply Make sure the connections are watertight Turn on the water supply 4 Clean the dispenser drawer Occasionally, a 4C check code error message may be displayed if there is a blockage in the dispenser drawer. Remove the drawer Check for any obstructions Clean if required Insert the drawer back into the washing machine To view this video, you must Accept and consent to the use of cookies. If you have just started living by yourself, using the washing machine can be a bit daunting. How much detergent do I need? Do I need fabric softener? What do all the different settings do? Fortunately, Samsung's washing machines are easy to use, and any doubts you have, Samsung Support can help you out. However, when an error code pops up on the display, it might feel like it's time to panic. Error code? What have I done wrong? Who do I call? Don't worry we've got the solution. If you're seeing a 4C or 4E error code, it means that the washing machine has detected a problem with the water supply. The most common reason for this is a problem with the water supply hose. There are a few things you can try. Check the water hose First, unplug the washing machine from the mains Move the washing machine forward so you can access the hose Check there are no kinks, damage, or any other kind of obstructions to the hose Check the water supply Make sure the tap is fully open and that there are no leaks Clean the water hose's mesh filter It's important to clean this filter at least twice a year Turn off the water supply Disconnect the inlet hose from the water supply, then disconnect the L-shaped arm from the washing machine Gently pull out the mesh filters, including the water solenoid inlet on the washing machine Rinse the mesh filters under running water until they're clean Once the filters are clean, reinsert them where they came from Reconnect the hoses, first to the washing machine then to the water supply Make sure the connections are watertight, then turn the water supply back on and check for water leakages Clean the dispenser drawer 4C or 4E can sometimes appear if there is a blockage in the dispenser drawer Remove the dispenser drawer and check if there are any obstructions Clean the drawer if you need to Reinsert the drawer if you're still seeing the 4C or 4E error, get in touch with Samsung Support. The Community Team Discover more: Samsung's environmental strategy Samsung x LIFE Picture Collection Samsung brings Odyssey City to Gamescom 2022