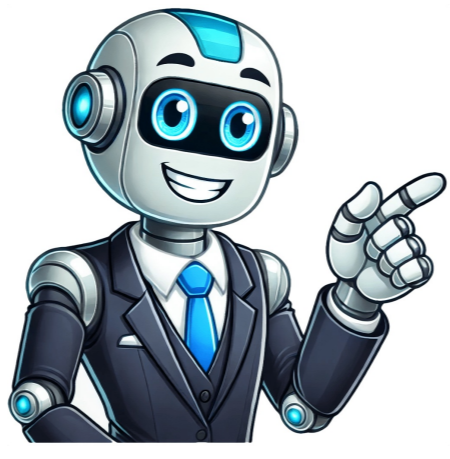


Continue





After conducting several online searches for answers on how to change isometric view in AutoCAD, we noticed a lack of clear information on this topic. Our website CAD-Elearning.com aims to fill this knowledge gap by providing free AutoCAD tutorials that help engineers master technical drawing and design requirements. To effectively use AutoCAD software, users must be able to navigate its features and tools efficiently. Changing isometric view in AutoCAD involves toggling the Isodraft icon on the Status Bar on or off and selecting the desired isoplane mode using the down arrow next to it. This simple process allows users to switch between orthographic and isoplanes views seamlessly. The F5 key also serves as a quick toggle for switching between the three isoplanes (top, right, left) in AutoCAD. For those using newer versions of AutoCAD, an Isoplane icon on the status bar enables easy entry into Isometric Drafting Mode. To change to isometric view or switch from 2D to 3D, users can follow various methods outlined in this article, including pressing the F5 key and selecting the desired plane orientation. Additionally, specific commands such as ELLIPSE and ISOPLANE allow for precise control over drawing isometric circles and planes. For users of AutoCAD 2020, creating an isometric dimension involves a series of steps including specifying center and radius or diameter of the isocircle. Drawing an isometric view in earlier versions like AutoCAD 2010 requires entering specific commands at the prompt to achieve the desired outcome. By understanding these simple yet crucial functions, users can efficiently navigate and master AutoCAD's capabilities for creating coherent designs and meeting changing design requirements. How to turn off Isometric view in AutoCAD: To deactivate isometric drafting, simply click on the Isodraft icon on the Status Bar. When deactivated, the button will appear grayed out or blend with other buttons. Isometric settings and modes in AutoCAD involve the following settings: - ISOPLANE mode - Isometric sketching - Isometric cube drawing - Grid cad drawing - Aligning dimensions A, B, and C using the DIMINALIGNED command To turn off isometric mode in Autocad: - Press F5 to change direction - Press F8 to turn on ortho mode - Use the ISODRAFT option in newer AutoCAD versions or access it through drafting settings and status bar. How to Turn Off Isometric Mode In Autocad - Isometric Drafting Status Bar Button and Benefits of Using Printable Templates Choose the Right Template for You: Select a template that's made for your specific use. This will help save time and make sure your template does its job well. Make Your Template Personal: Don't be afraid to change things up and make your template fit your needs. Add your own logo, rearrange the layout, or adjust what's inside. Use Good Pictures: Use high-quality images and graphics to make your template look professional and appealing. Double-Check Your Work: Always read through your template carefully before printing to catch any mistakes and make it look good. Printable templates are super useful for getting things done faster, being more productive, and reaching your goals. By understanding what printable templates can do and how they work, you can unlock their full potential. Whether you're a business owner, student, or just someone looking to stay organized, printable templates are a must-have tool that can help you succeed. The Power of Isometric Drafting in AutoCAD: A Step-by-Step Guide Using drawings is a great way to produce precise and visually appealing isometric sketches that are particularly useful for engineers, architects, and designers. The process is easy and simple if you stay on track with our few more steps. Tool Palettes: You can set up a tool palette for 2D drafting if you have specific tools and settings. This way, when you turn off isometric mode, you can easily access your 2D tools from the palette, making your workflow smoother. Staying Updated with AutoCAD Tutorials: Check Autodesk's official website or forums for tutorials, tricks, shortcuts, or updates related to isometric drafting. Creating a Custom Command: If familiar with customizing AutoCAD, create a command or script that changes isometric settings with a single click. This is more advanced but can be efficient when switching modes frequently.

[How to turn off 3d cursor in autocad.](#) [How to turn on cursor in autocad.](#) [How to turn off isometric view in autocad.](#) [How to change isometric cursor in autocad.](#) [Autocad isometric cursor command.](#) [How do i turn off isometric cursor in autocad.](#) [How to turn off isometric drafting in autocad.](#)