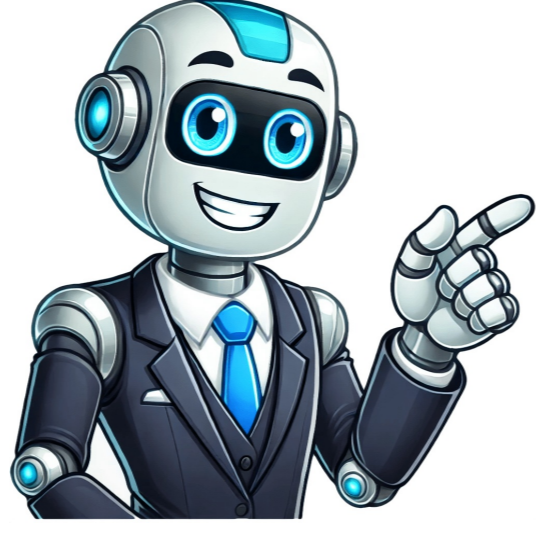


Click to prove
you're human



Vault Server Install InformationIf you have previous Beta Vault products installed on your machine, you will need to uninstall them prior to installing this release.Uninstall the client software from all machines.Open the Beta ADMS Console.Delete all vaults and libraries.Delete the master vault.Uninstall ADMS. (please close Vault Client and Server, before initiating the Uninstall command)Autodesk Vault 2022 installs .NET 4.8 to your operating system. Further, Vault 2022 requires ASP.NET 4.6 be enabled when installing IIS on ADMS. If you encounter an error during ADMS installation, go to Start > Control Panel > Programs > Turn Windows features on or off > .NET Framework 4.6 Advanced Services and enable ASP.NET 4.6.SQL Server Install InformationVault Server installation installs SQL Express 2017 with Advanced Services (64-bit).Inventor 2022 Content Center Full Text search features requires that the Full-Text and Semantic Search feature inside of SQL Server enabled. The Full-Text and Semantic Search feature is available with SQL Express with Advanced Services or higher editions. See the following Microsoft documentation Add Features to an Instance of SQL Server or Upgrade SQL Server.An issue has been discovered with SQL access after .NET 4.6 has been installed on the same machine. The issue found is that the Vault Server will be unable to connect to the SQL Database Engine using the TCP protocol when the Vault Server and the SQL database engine are installed on the same machine. Until a Microsoft fix is available, it is recommended that you edit the protocol priority in the SQL Configuration manager. In the manager, place Shared Memory first followed by TCP then Named Pipes. Make sure that Shared Memory protocol is enabled for this to work properly.When installing Vault Server using Local Language on Local O/S, the following message may appear: "This SQL Server setup media does not support the language of the OS, or does not have the SQL Server English-language version installation files. Use the matching language-specific SQL Server media, or install both the language specific MU1 and change the format and system locales through the regional settings in the control panel." See Microsoft's documentation for more information.When using SQL Server 2016, SQL 2017 or SQL Server 2019, all databases must remain at the SQL 2012 compatibility level. New databases created using the Vault Server Console will be set for 2012 compatibility level automatically.Installing SQL onto a computer that has the Program Files folder compressed is not supported and will cause the install to hang.With Vault Server Professional 2022 installation, user can specify the SQL User ID to connect the SQL instance.With Vault Server 2022 installation, user can specify customized "SQL instance name". By default, the SQL instance name will be 'AutodeskVault' same as what is supported till Vault 2020 release. During installation, installer will install the SQL and create instance with the specified name.Migration - Working with Legacy Vault DataSupported Migration VersionsVault Basic 2020Vault Workgroup 2020Vault Professional 2020Vault Basic 2021Vault Workgroup 2021Vault Professional 2021If you are migrating from a previous release using SQL 2014 or older, prior to upgrading, SQL Server 2016 or higher must be installed.If you are migrating from any previous release, Autodesk strongly encourages reviewing and understanding the README of each version of Vault being skipped.When migrating large vaults, there may be a long delay before the progress dialog is shown. The delay can exceed 10 minutes depending on the configuration of the vault.Migrating from one OS to another OS when OS formatting (Regional Settings) is different between the two is NOT supported. Prior to upgrading to Vault 2022, OS formatting on the target server must be changed to match that of the originating server.When performing an in-place upgrade from previous releases of Vault with Content Center Libraries, the existing Content Center Libraries must be migrated prior to installing the new Content Center Libraries.Return to Top Vault Client Install InformationAutodesk Vault 2022 installs .NET 4.8 on your operating system. If you encounter any error during .Net 4.8 installation, reboot your machine and try the installation again. Refer to Microsoft Page Known issues for the .NET Framework 4.8 for more information.Before installing the Vault 2022 client, be sure to uninstall all Beta versions of Vault components including InventorView, DWG TrueView, etc., otherwise the correct versions of these components may not install properly. Note you need to close the applications before initiating Uninstall command.Please close all Autodesk products before initiating installation or uninstallation of Autodesk Vault 2022.Uninstall all standalone language packs of Autodesk Vault 2022 before re-installing the same.When you create deployment for Vault from recommend you to use all English character for Deployment image path.Return to Top Tags Related tags: system requirements I looked right past the Win 10 OS. My bad.So now I tried to install Vault Pro 2024 on this machine. I d/d and saved the install files local and ran the install. It gives me this error. This machine has Win 11 Business. I have other machines with Win 11 Business and Vault Pro 2024 installed just fine on those. From what I can see, this machine meets all the requirements for Vault Pro 2024. Share copy and redistribute the material in any medium or format for any purpose, even commercially. Adapt remix, transform, and build upon the material for any purpose, even commercially. The licensor cannot revoke these freedoms as long as you follow the license terms. Attribution You must give appropriate credit , provide a link to the license, and indicate if changes were made . You may do so in any reasonable manner, but not in any way that suggests the licensor endorses you or your use. ShareAlike If you remix, transform, or build upon the material, you must distribute your contributions under the same license as the original. No additional restrictions You may not apply legal terms or technological measures that legally restrict others from doing anything the license permits. You do not have to comply with the license for elements of the material in the public domain or where your use is permitted by an applicable exception or limitation . No warranties are given. The license may not give you all of the permissions necessary for your intended use. For example, other rights such as publicity, privacy, or moral rights may limit how you use the material. And what is strange? that before 9.10.2025 everything worked /www.autodesk.com/support/technical/article/caas/sfdcarticles/sfdcarticles/Unable-to-install-...

Autodesk vault web. Autodesk vault thin client system requirements. Vault thin client 2022. Autodesk vault client. Autodesk vault system requirements. Autodesk vault numbering scheme.