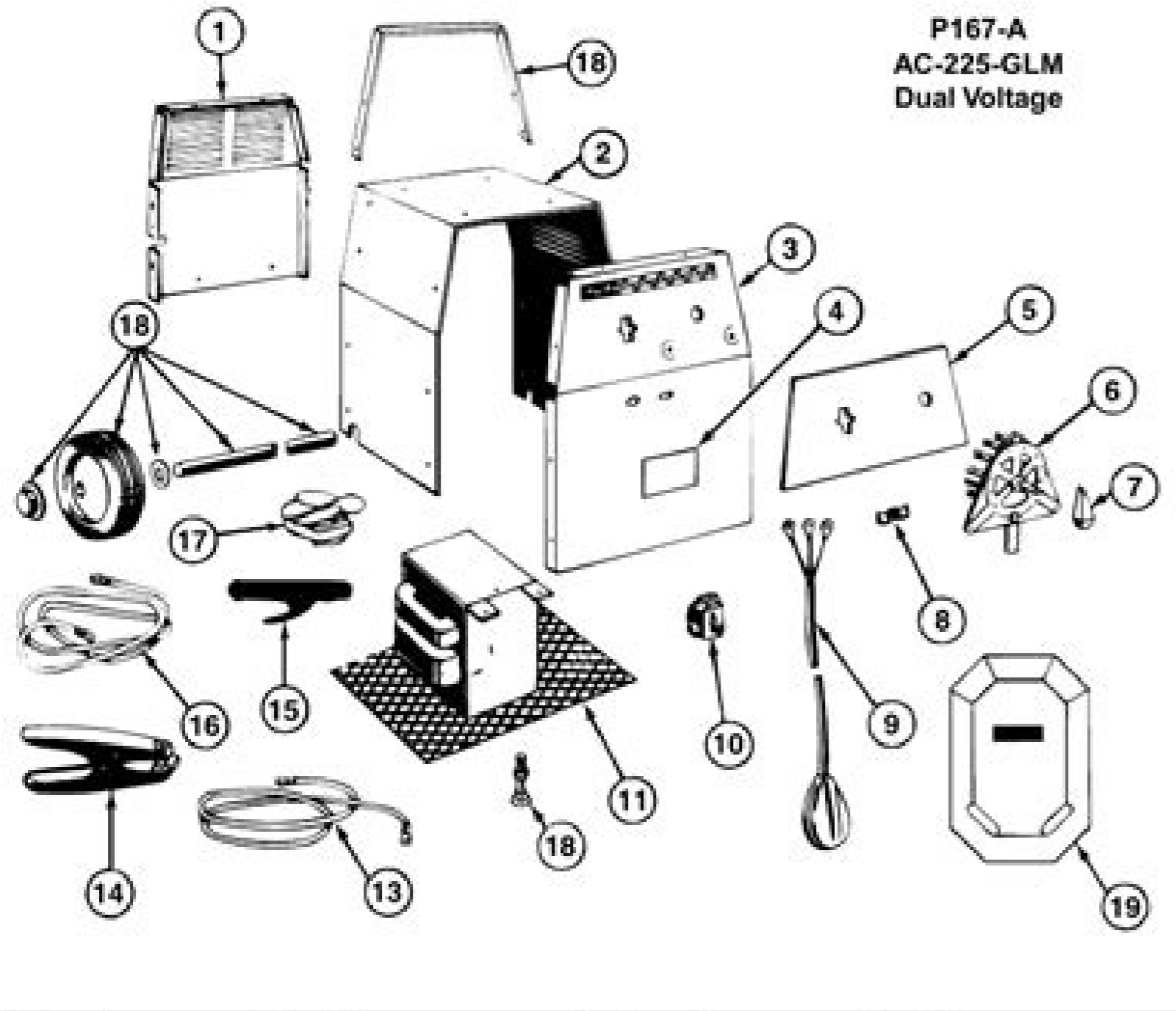


I'm not robot!

84840360576 62552358585 19879373.9125 97232721678 31258804608 42001105300 9773733.9736842 217315290 138128540550 10243126082 3452088.9230769 69182533.666667 15478040.18 17226479.747253 77556703997 16898535056 38787400.234043 301067635 49957530300 110404980676 21781969.851852 57747993.060606 36213834.035714 53813427.6875 47955194.609756 14628302.797619 75921538.25 126411626 81337383747

How To Use Parts List

1. Refer to the drawing below.
2. Find the part on the drawing.
3. Using the item number from the drawing find the part name and description in the table.
4. Get the welder code number found on the nameplate.
5. Order the part from The Lincoln Electric Company, or from a Lincoln Field Service Shop. Be sure to give the Parts List number, item number, part name and description, number required, the welder name, model number and code number.



**P167-A
AC-225-GLM
Dual Voltage**

Item	Description	Item	Description
1	Back Case	10	Line Switch
2	Wrap Around	11	Transformer and Base
3	Front Case	13	Work Cable
4	Warning Decal	14	Work Clamp
5	Nameplate	15	Electrode Holder
6	Range Selector Switch	16	Electrode Cable
7	Handle	17	Fan Motor and Blade
8	Output Lead Clamp	18	Undercarriage Kit
9	Input Cable (230 V Input)	19	Hand Shield (Optional)

